









The modern architectural form of Cascade City is influenced by the stunning landscape of the West Coast. Innovation is honoured throughout the building by using only materials of the highest quality, combined with an extensive arrangement of trees and plants lining the street below. These design considerations come together to create something truly special – an architectural statement in the City of Richmond.

# AN ARCHITECTURAL STATEMENT



ONE ICONIC LANDMARK;  
ENDLESS POSSIBILITIES

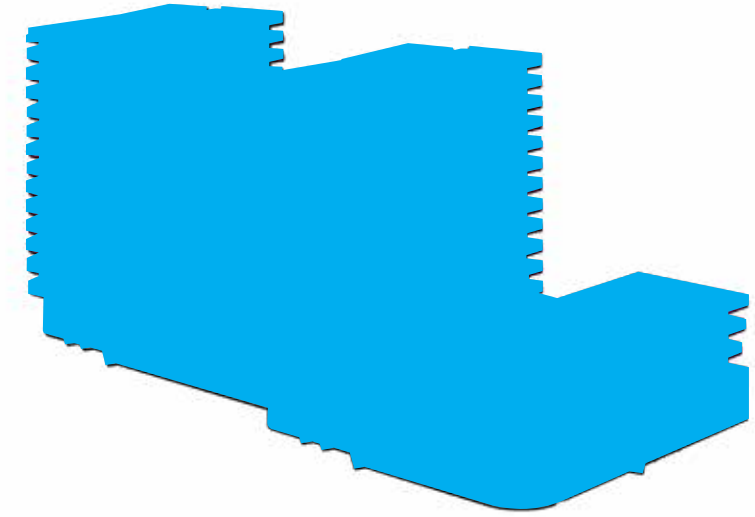
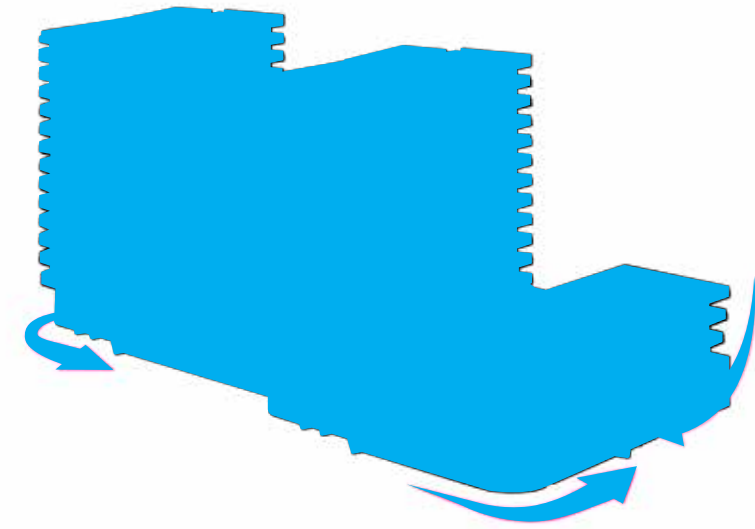
Cascade City will change the Richmond skyline, introducing iconic architecture like nothing else in this city.



# THE NATURAL COURSE OF ARCHITECTURE



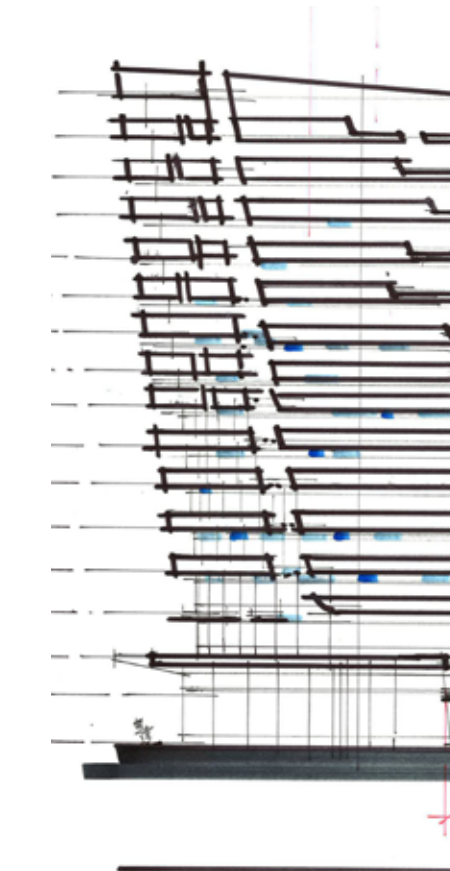
The fluid nature of Cascade City's architecture is inspired by the dynamic movements of the Fraser River. Simulating a geography shaped by the water, the vertical structure is layered to resemble the rhythmic topography of the river. This architectural flow creates an expression that beautifully replicates two contrasting qualities of nature – tranquility and strength.



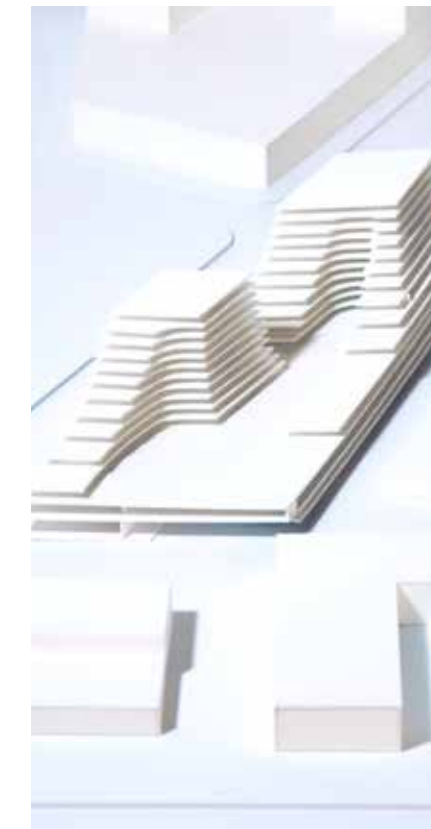
## TOPOGRAPHY & SEDIMENTATION

This project expresses the flow of water through its uniquely layered topographical form. The most prominent expression of this layering is the "sedimentary ribbons," expressed in "cuts" through the structure. These "cuts" transition between horizontal and vertical surfaces in a continuous flow and work to break up the form into coherent parts. The gold trim on the facade are inspired by the gold rush era of the Fraser River.

## EVOLUTION OF DESIGN



*Initial sketch*



*Early draft model*



*Alternative concept*



*To scale model*



*Line rendering*



*Rendering detail\**

The cumulative effort of developer and architects unfolded across 3 years of thoughtful planning, through an evolution of several stages of detailed design. After several iterations, our vision was achieved: an iconic architectural form.

*\*Artist's interpretation*







# BEGIN WITH A GRAND ARRIVAL

Experience a familiar sense of welcome as you approach  
the modern architectural form you will call home.







# SEAMLESS INDOOR AND OUTDOOR LIVING

Light extends throughout living areas to enhance the spacious and airy feeling. Innovative shallow suites are incorporated into the design to accommodate more windows, brightening every space and accentuating the view. Generously proportioned outdoor spaces expand the living area by up to 2,200 square feet, adding more illumination and openness to each home.





## THE HARMONIOUS FLOW OF SPACE

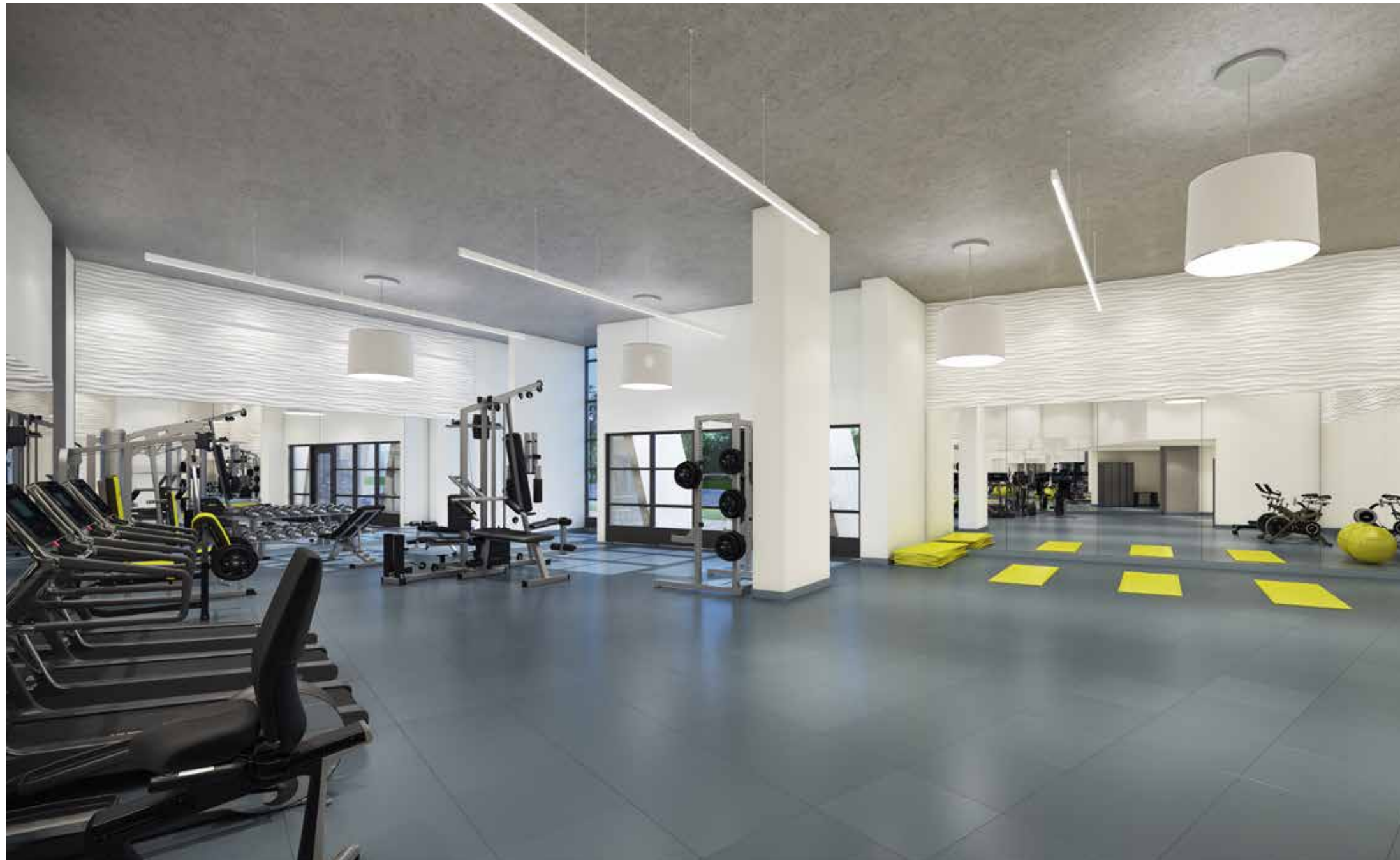
The concept of luxury and functionality flows from one space to another with effortless continuity. Carefully considered finishes, including engineered oak hardwood flooring, elevate and add depth to the aesthetic. Select from a light or dark scheme to align kitchens and bathrooms to your tastes.

Upscale Miele appliances and Grohe faucets make day-to-day living effortless, while open layouts invite socializing in your contemporary kitchen. High-gloss, flat-panel, Italian cabinetry by Aster Cucine brings the space together with elegant and modern design.

Refined bathrooms evoke a serene quality that provides you with a sanctuary-like space. European influences are throughout, from marble-inspired porcelain tile to Italian cabinetry. Designed with the stylish yet practical Duravit toilet and Aquabrax faucet and shower kit, every detail in your bathroom creates a relaxing retreat at the beginning and end of your day.





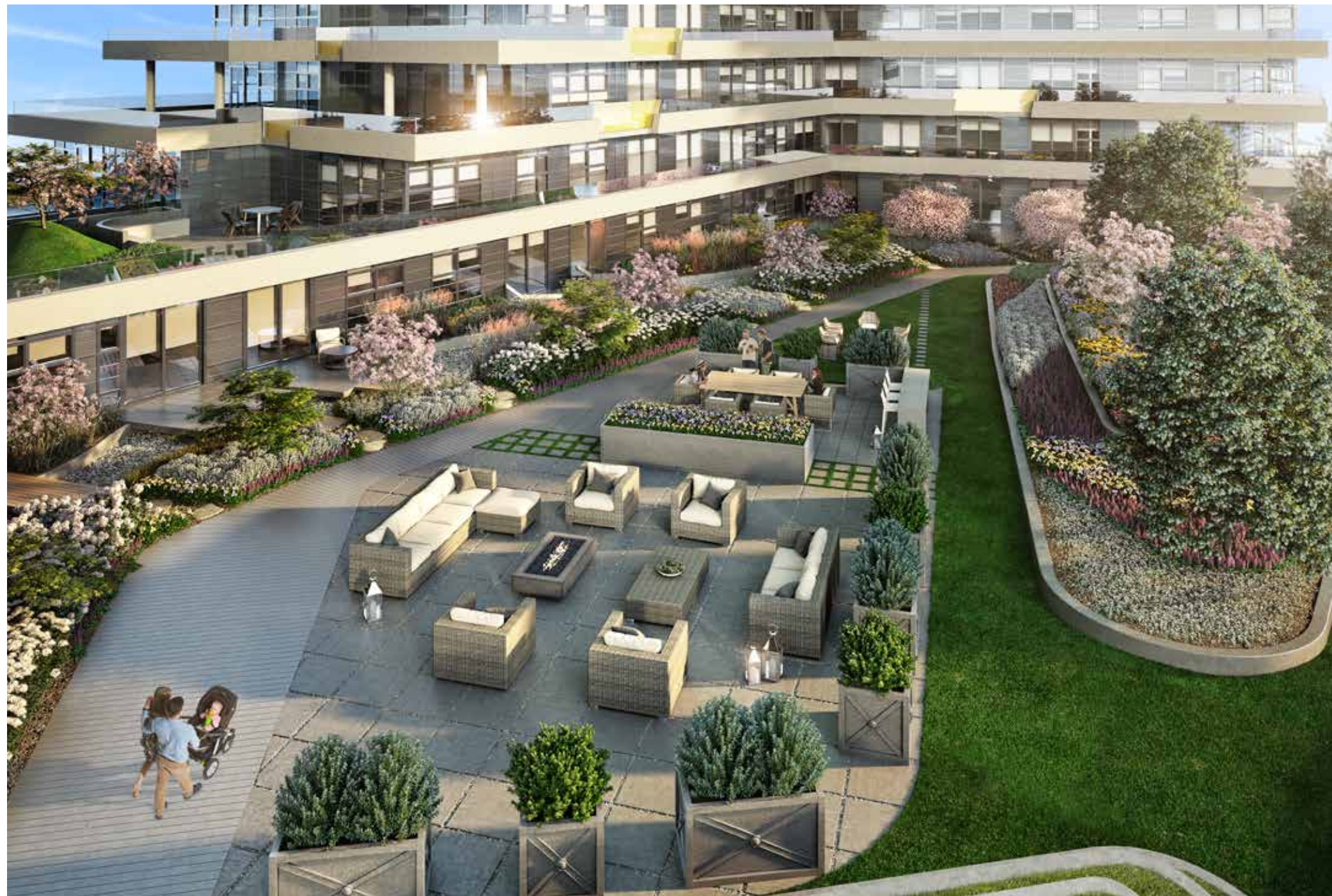


# HEALTHY LIVING AT CLUB CASCADE

Emphasis is placed on health and wellness in the sophisticated interior of Club Cascade. The exclusive, double-height fitness centre is a convenient space to reset your mind and hone your body. Become familiar with the state-of-the-art equipment from Technogym or practice yoga with a view.



# RELAX AND ENTERTAIN IN STYLE



Enjoy the oasis of amenities designed around the lushly landscaped grounds.

A beautiful podium-level garden is accented with a variety of privacy planters, while a lounge area with a central fireplace provides space to spend time together outdoors.

For those special moments and occasions, entertain your family and friends in a stately dining room or enjoy a game of billiards or ping pong.

Add meaningful activity to your life. A piano room and separate music practice room with music stand and chairs are ideal for rehearsal space. Gather for study in a quiet meeting room or screen a film and sing karaoke in the theatre room. There is also a welcoming guest suite to comfortably accommodate visiting friends and family members.







# URBAN AMENITIES ALL AROUND YOU

## ● PARKS & REC.

1. Olympic Oval
2. Minoru Park
3. Richmond Tennis Club
4. Steve Nash Fitness World
5. Brighouse Park
6. Richmond Lawn Bowling Club
7. Oxygen Yoga & Fitness
8. Richmond Pro Badminton Centre
9. City Centre Community Centre

## ● SHOPPING

1. CF Richmond Centre
2. Aberdeen Centre
3. Lansdowne Centre
4. McArthurGlen Designer Outlet
5. T&T Supermarket
6. Superstore

## ● ENTERTAINMENT

1. Richmond Art Gallery
2. River Rock Casino Resort

## ● LEARNING

1. Kwantlen Polytechnic University
2. Richmond Public Library
3. BCIT - Aerospace Campus
4. Trinity Western University
5. Richmond Secondary School
6. Henry Anderson Elementary

## ● DINING

1. Cactus Club Cafe
2. Dinesty Dumpling House
3. Empire Seafood Restaurant
4. Kirin Restaurant
5. L'Opera Patisserie
6. American Grille
7. Pier 73 Restaurant
8. Richmond Night Market
9. Tea Monarch
10. Carver's Steakhouse
11. Copa Café
12. Fortune Terrace
13. Restaurants on Alexandra Rd



# A DIVERSE NEIGHBOURHOOD



Immerse yourself in a vibrant city lifestyle. Your home at Cascade City is surrounded by a vast array of restaurants and bars. Shops and services are in abundance at Richmond Centre, Aberdeen Centre, and McArthurGlen Designer Outlet. It's easy to navigate to downtown Vancouver with the nearby Canada Line or explore the world via YVR Airport, simply a short drive away.





Connect with your community and achieve a balanced lifestyle. Stay active at Richmond Olympic Oval or on the neighbourhood tennis courts at Minoru Park. Savour the views on a bike ride or walk along Richmond's scenic Dyke Trail. It's all at your fingertips at Cascade City.





# BEGIN TO LIVE HOLISTICALLY





# UNITED TO CREATE A LANDMARK

## **DEVELOPMENT** / LANDA GLOBAL PROPERTIES

For over three decades, Landa has contributed to landmark neighbourhoods and created residences that blend innovative design with exceptional quality. With their commitment to creating homes that become the foundation of a community, Landa continues to set the standard for excellence with Cascade City.

## **ARCHITECTURE** / ARNO MATIS ARCHITECTURE

Two renowned architectural firms combined their expertise to envision the iconic structure that will reshape Richmond's skyline. Arno Matis Architecture was one half of this unique collaboration, bringing an innovative spirit and distinctive modern design to create the impressive form of Cascade City.

## **ARCHITECTURE** / RAFII ARCHITECTS

Rafii Architects was the other half of this architectural collaboration, utilizing their keen sense of modern innovation, expertise, and functional design to complete Cascade City's landmark vision.

## **MARKETING** / RENNIE MARKETING

Rennie focuses on the lifestyle of families and individuals, striving to build generational relationships with their clients in every residential sale. By placing emphasis on community, they connect people with places for optimal compatibility.









