

THE  
**BURQUITLAM**  
CAPITAL

That Last Great Place

VIP PREVIEW PACKAGE

☎ **778 885 3261**

[bobzhong@gmail.com](mailto:bobzhong@gmail.com)

*Bob Zhong* 鍾博  
住宅 商業 買賣 租管 



## THAT LAST GREAT PLACE

Now that Lougheed, Burnaby, Coquitlam and Port Moody have been extensively developed, there is only one last great place to live - Burquitlam, the last place to be developed with its own SkyTrain station. Located just on the border of Coquitlam and Burnaby, Burquitlam is a growing community right at the heart of it all.

Now, even as housing prices soar and chances to own disappear, a new opportunity is here: The Burquitlam Capital. This 23-storey development is the gateway to a new SkyTrain community where Burquitlam Station will soon be right next door and the life you want to live is not only possible, it's affordable. This is that last great place to own - to call your home. Welcome to The Burquitlam Capital.

**778 885 3261**

[bobzhong@gmail.com](mailto:bobzhong@gmail.com)

Bob Zhong 鍾博

住宅 商業 買賣 租管



# MAGUSTA DEVELOPMENT

As a member of the Magusta Group, we are part of a global team that serves countless happy customers, not just in Canada, but in Hong Kong and China as well. Our customers have diverse needs, and we know how to tailor our work to them. We've learned this from years of international experience in property investment and development, serviced apartments, engineering and design, and consulting services for hotels and restaurants.

# GOOD URBAN DESIGNS

We believe that good quality urban design is more than an accessory to a good home – it's a necessity. That's why you'll find that our developments aren't just great places to live; they are also great neighbourhoods to live in. Our projects are built with easily accessible walkways right at your door, so whether you're outside or inside, it's easy to make yourself at home.


# THE BUILDING

With 193 fabulous homes and 10,534 square-foot ground-level commercial space planned for a restaurant, a coffee shop, and other services that will make your life easier, The Burquitlam Capital is designed with you in mind. With plenty of amenities like a fully equipped gym, rooftop podium garden, lounge and a meeting area for private events. The Burquitlam Capital will fit into your life like a new glove. Two parkettes on the north and south side of the building connects you to a quiet outdoor experience where you can enjoy a good read. But best of all, you're just three minutes away from the Burquitlam SkyTrain Station for travel to Downtown Vancouver or to any of the other stops on the SkyTrain line.

# TRUSTED PARTNERS

- Rositch-Hemphill Architects
- Marcon Construction
- False Creek Design Group
- Cityscape Design Group
- Fingerprint Strategies
- Spring Advertising
- TAC Real Estate
- MillerWark Real Estate

**778 885 3261**  
[bobzhong@gmail.com](mailto:bobzhong@gmail.com)

*Bob Zhong* 鍾博  
住宅 商業 買賣 租管 





## THE COMMUNITY

- 1 Life is within walking distance. You can start your day at the planned coffee shop in the building's streetfront retail and if you choose you can have dinner in the planned restaurant.
- 2 Less than a three-minute walk to Burquitlam Station, providing you with a world of accessibility at your door.

- 3 With new developments emerging in the neighbourhood, there are plenty of neighbours to meet and make this a thriving community.
- 4 Go for a quick shop or make a day of it. Your local grocery store will soon be a short five-minute walk away meaning that you can shop fresh every day. Lougheed Town Centre and Costco are within a five-minute drive and there are wide variety of restaurants and retailers within just a few minutes walk from your home along North Road and Austin Heights.

- 5 A wide-array of elementary schools within your catchment and the world-renowned Simon Fraser University is just a 10-minute drive away.
- 6 Saying hello to city living doesn't mean saying goodbye to the great outdoors. There are countless outdoor adventures that are yours to discover within easy reach.

**778 885 3261**  
bobzhong@gmail.com  
Bob Zhong 鍾博  
住宅 商業 買賣 租管 



## LIVING SPACE

---

- Modern interiors by False Creek Design Group
- Contemporary laminate wood flooring in living areas
- 40 oz. nylon cut pile carpet in all bedrooms
- Polished chrome hardware throughout
- 24-inch front loading stacked ENERGY STAR Blomberg washer and dryers
- 9-foot ceilings throughout the building except for the top floor that has 10-foot ceilings
- The two penthouse floors of the building have air-conditioning

## BATHROOM

---

- Beautiful wood grained cabinets with an under mounted sink over a large storage drawer for your convenience
- Counter tops made of Caesar Stone are beautiful, easy to clean and easy to love
- Polished chrome Grohe fixtures throughout each home
- Sumptuous bathrooms that look great while you relax and enjoy a bath in the large soaker tub. Or if you choose a plan with two bathrooms you'll have a separate shower with unique rolling hardware that smoothly opens and shuts the large glass doors
- Dual flush, low consumption European-styled toilet



**778 885 3261**

[bobzhong@gmail.com](mailto:bobzhong@gmail.com)

Bob Zhong 鍾博  
住宅 商業 買賣 租管 



## KITCHEN

---

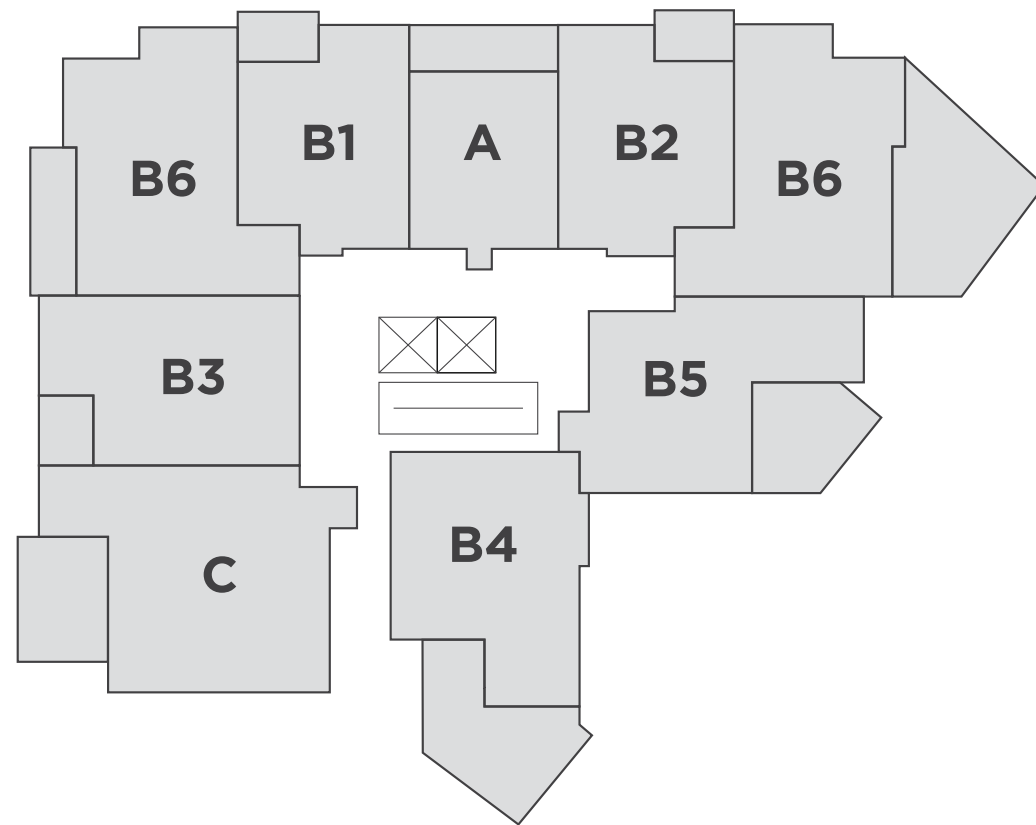
- Beautiful wood-grained cabinetry with soft-close doors and drawers offer generous storage and extra large pot drawers to maximize space and make your home look great all at the same time
- Polished Caesar Stone quartzite makes for an easy-to-clean, durable countertop that you'll fall in love with
- 32x18-inch stainless steel double bowl kitchen sink is easy to use, built to last, and made beautifully
- Polished chrome Grohe kitchen faucet with pull-down spout maximizes efficiency so you can wash less and cook more
- High-performance Porter & Charles induction cooktop heats up and cools down faster while its efficient design leaves plenty of space for other deliciousness. Safety features include:
  - Cool touch
  - Easy clean surface
- Modern stainless steel appliances bring high-performance efficiency and beautiful designs together for one incredible kitchen space
- ENERGY STAR appliances include:
  - Fulgor wall oven
  - Built-in Faber Inca Smart Insert Hood
  - Full-size GE dishwasher
  - Panasonic Microwave and Blomberg refrigerator with bottom-mount integrated freezer
  - For penthouses and townhomes: Fisher Paykel refrigerator with bottom-mount integrated freezer, including ice maker and water in the fridge door
  - For penthouses and townhomes: a full-size Blomberg dishwasher with room for 12-place settings
  - For penthouses and townhomes: a 30-inch high performance Porter and Charles induction cooktop plus a Perfect Insert 30 Hood and a 30-inch Fulgor wall oven offer exceptional performance

**778 885 3261**  
[bobzhong@gmail.com](mailto:bobzhong@gmail.com)

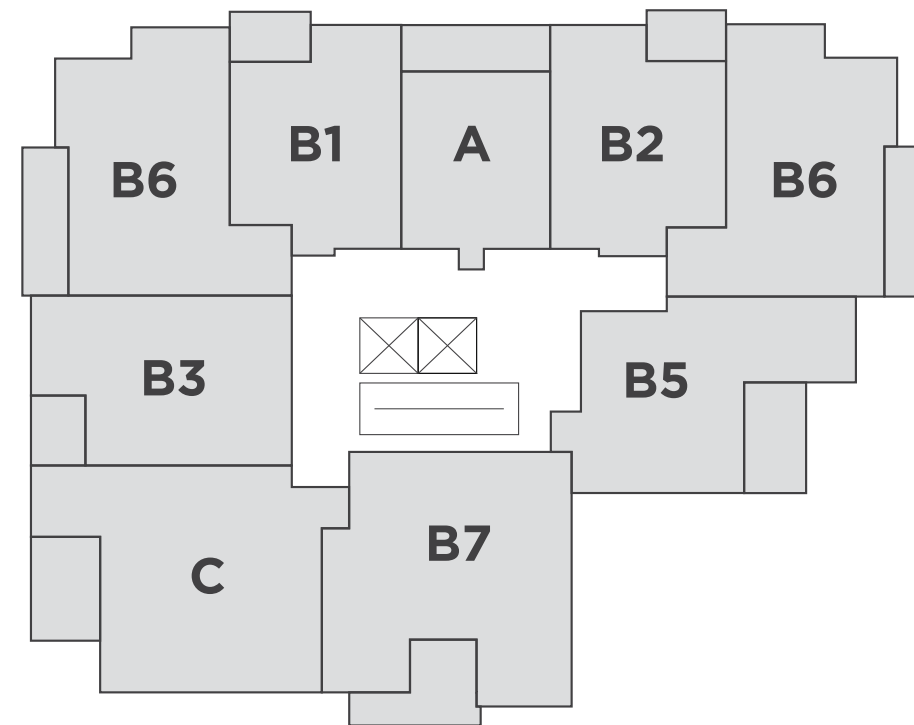
Bob Zhong 鍾博  
住宅 商業 買賣 租管 

# RESIDENTIAL UNITS

## FLOOR 2



## FLOORS 3-21



778 885 3261

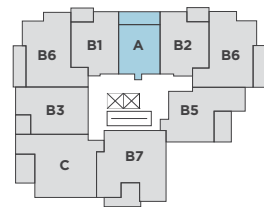
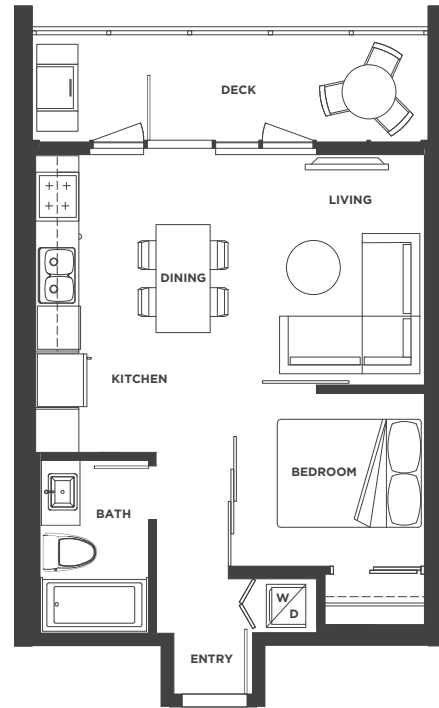
bobzhong@gmail.com

Bob Zhong 鍾博  
住宅 商業 買賣 租管



# RESIDENTIAL FLOOR PLANS

## A

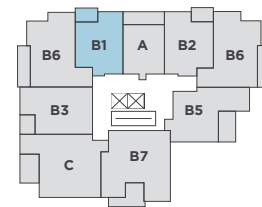
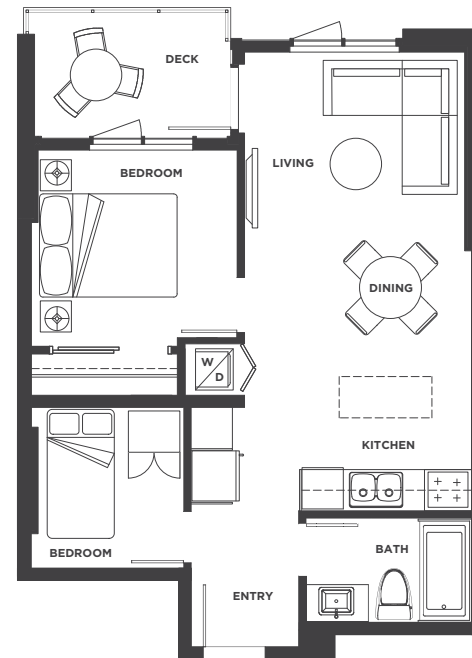


### 1 BED/1 BATH

**LIVING:** 446 SQ.FT.  
**BALCONY:** 99 SQ.FT.  
**TOTAL:** 545 SQ.FT.

Floors 2-21

## B1

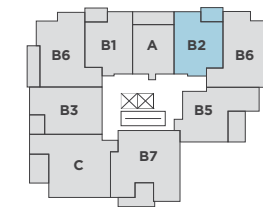
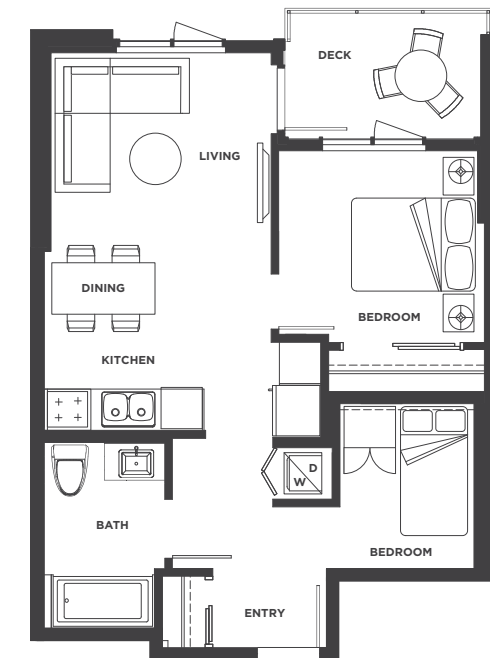


### 2 BED/1 BATH

**LIVING:** 575 SQ.FT.  
**BALCONY:** 62 SQ.FT.  
**TOTAL:** 637 SQ.FT.

Floors 2-21

## B2



### 2 BED/1 BATH

**LIVING:** 578 SQ.FT.  
**BALCONY:** 62 SQ.FT.  
**TOTAL:** 640 SQ.FT.

Floors 2-21

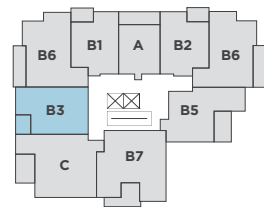
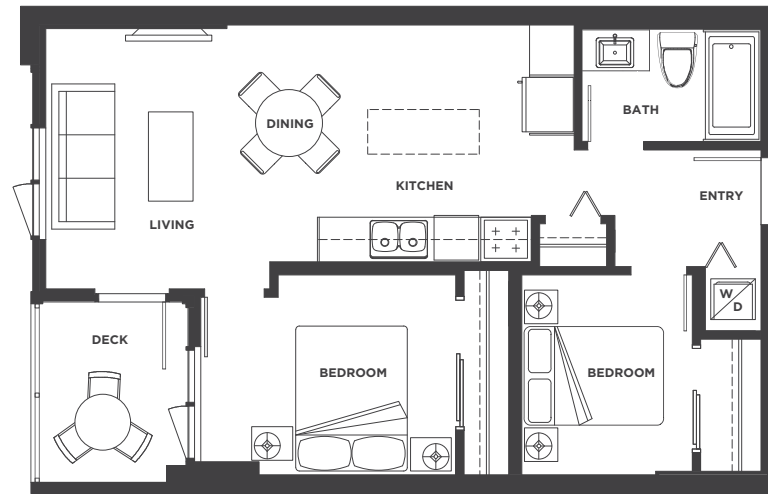


This is not an offering for sale. Any such offering can only be made by way of Disclosure Statement. Renderings, sketches, layouts and finishes are representations only. E. & O.E.



# RESIDENTIAL FLOOR PLANS

## B3

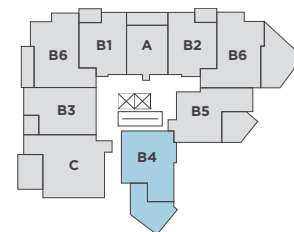
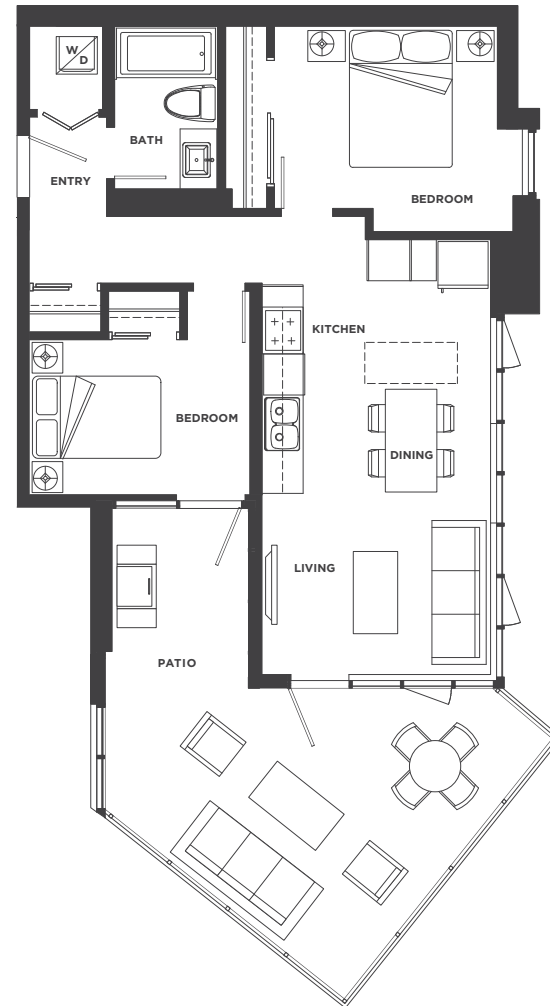


### 2 BED/1 BATH

**LIVING:** 643 SQ.FT.  
**BALCONY:** 56 SQ.FT.  
**TOTAL:** 699 SQ.FT.

Floors 2-21

## B4

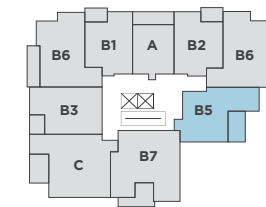
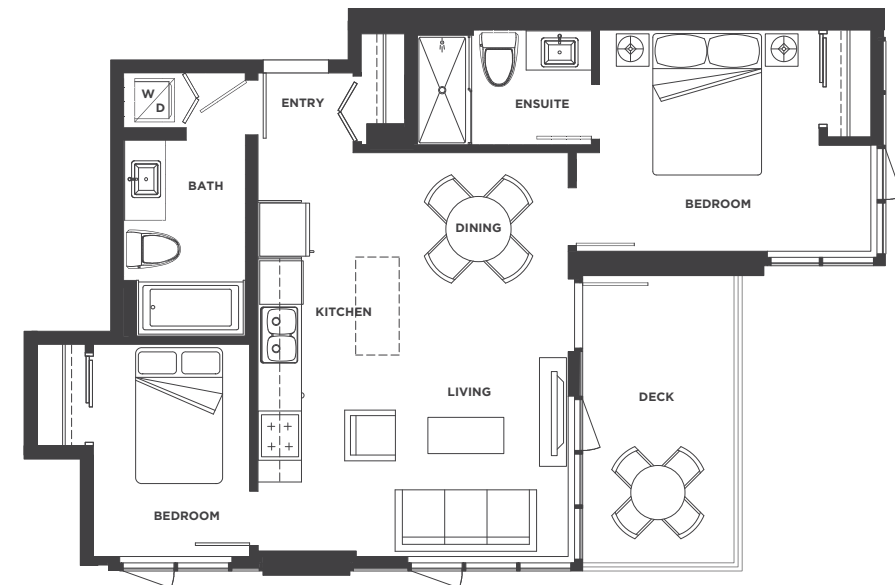


### 2 BED/1 BATH

**LIVING:** 676 SQ.FT.  
**BALCONY:** 297 SQ.FT.  
**TOTAL:** 973 SQ.FT.

2nd Floor

## B5



### 2 BED/2 BATH

**LIVING:** 704 SQ.FT.  
**BALCONY:** 103 SQ.FT.  
**TOTAL:** 807 SQ.FT.

Floors 2-21



778 885 3261

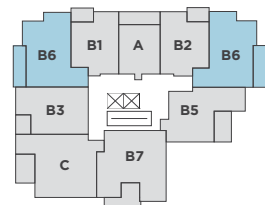
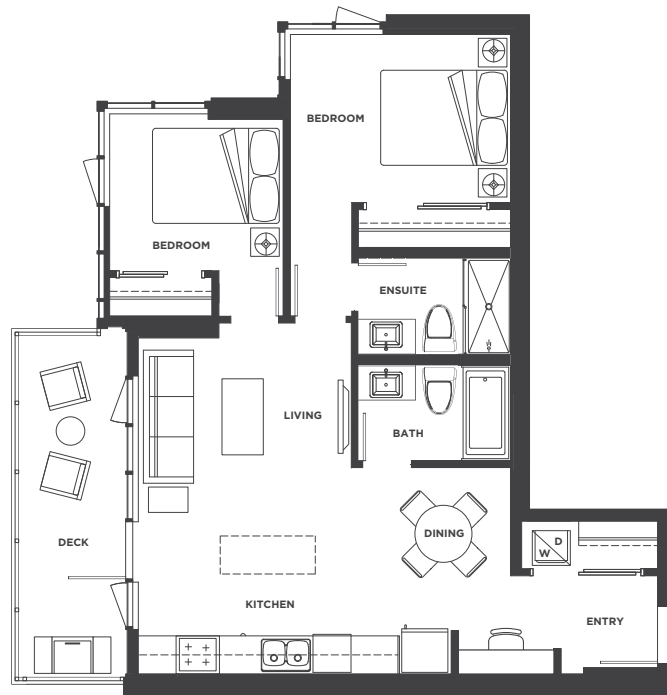
bobzhong@gmail.com

Bob Zhong 鍾博  
住宅 商業 買賣 租管



# RESIDENTIAL FLOOR PLANS

## B6

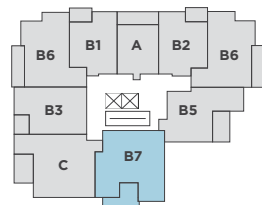


### 2 BED/2 BATH

**LIVING:** 771 SQ.FT.  
**BALCONY:** 110 SQ.FT.  
**TOTAL:** 881 SQ.FT.

Floors 2-21

## B7

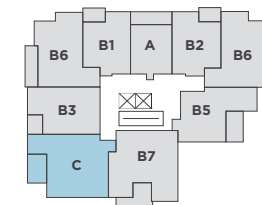
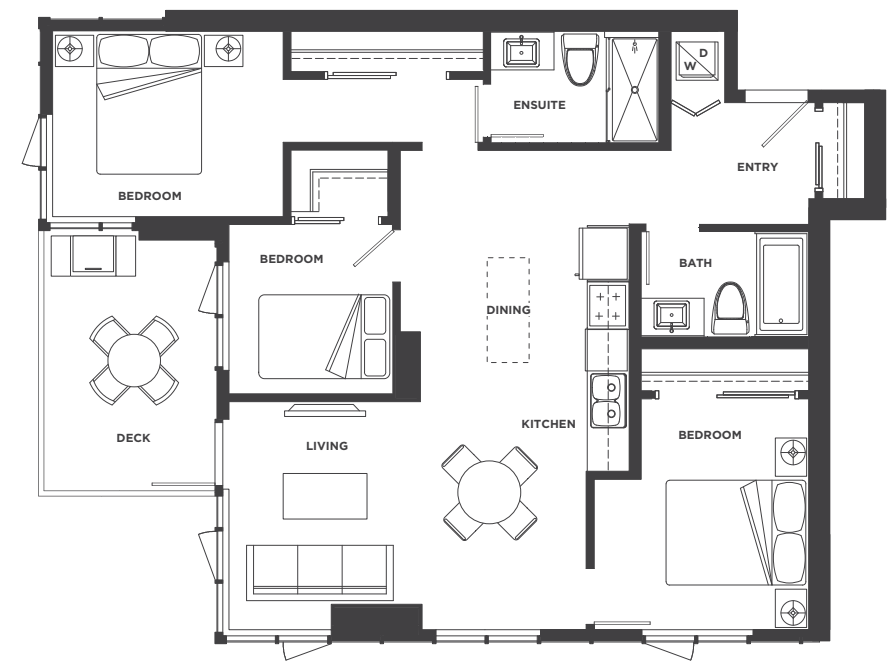


### 2 BED/2 BATH + DEN

**LIVING:** 917 SQ.FT.  
**BALCONY:** 111 SQ.FT.  
**TOTAL:** 1028 SQ.FT.

Floors 3-21  
*Balcony space varies by floor.*

## C



### 3 BED/2 BATH

**LIVING:** 936 SQ.FT.  
**BALCONY:** 106 SQ.FT.  
**TOTAL:** 1042 SQ.FT.

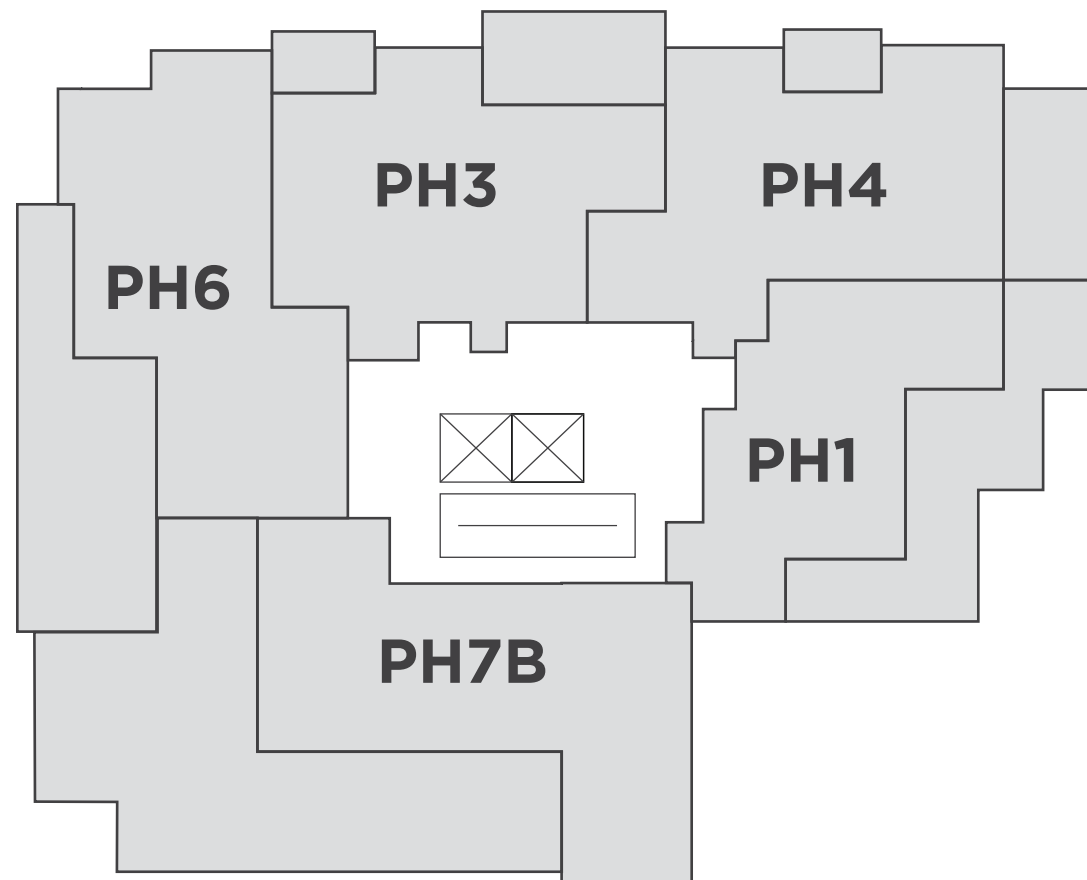
Floors 2-21



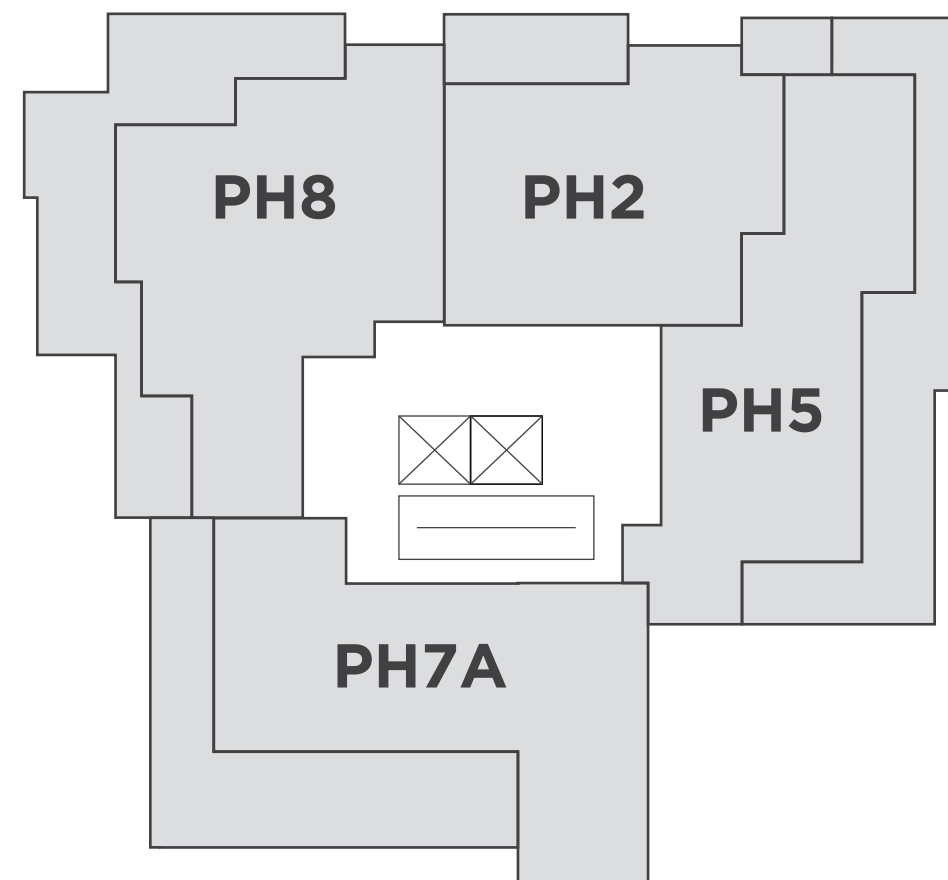
This is not an offering for sale. Any such offering can only be made by way of Disclosure Statement. Renderings, sketches, layouts and finishes are representations only. E. & O.E.

# PENTHOUSES

**PENTHOUSE LEVEL 22**

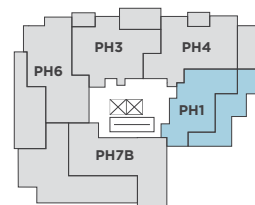
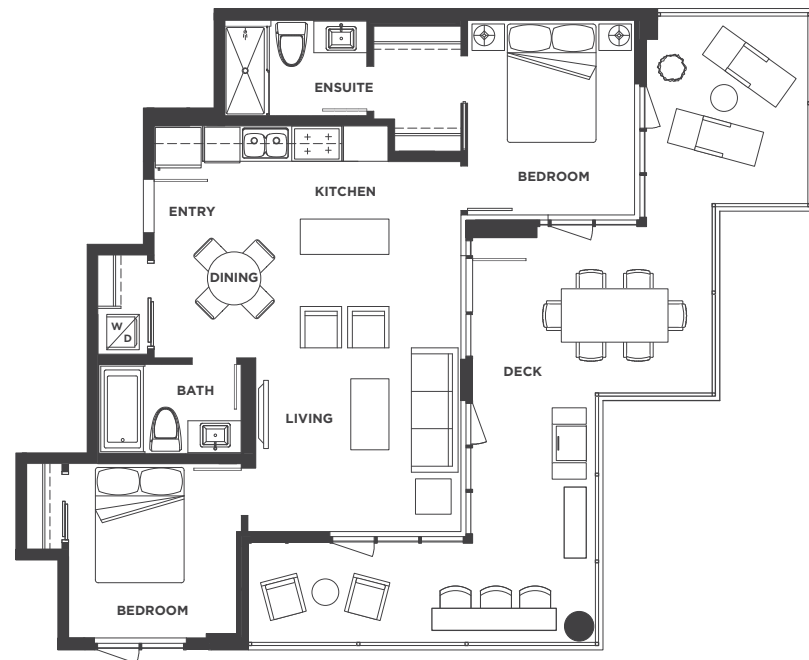


**PENTHOUSE LEVEL 23**



# PENTHOUSE FLOOR PLANS

## PH1

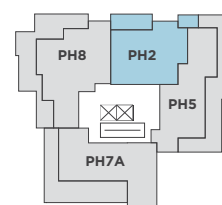


### 2 BED/2 BATH

**LIVING:** 776 SQ.FT.  
**BALCONY:** 469 SQ.FT.  
**TOTAL:** 1245 SQ.FT.

Floors 22

## PH2

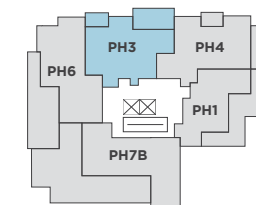
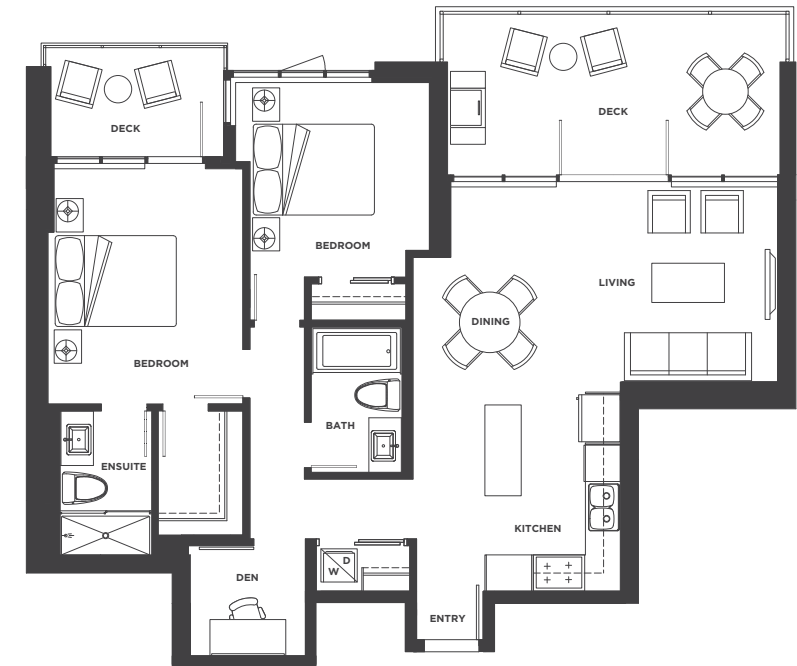


### 2 BED/2 BATH

**LIVING:** 904 SQ.FT.  
**BALCONY:** 140 SQ.FT.  
**TOTAL:** 1044 SQ.FT.

Floors 23

## PH3



### 2 BED/2 BATH + DEN

**LIVING:** 956 SQ.FT.  
**BALCONY:** 240 SQ.FT.  
**TOTAL:** 1196 SQ.FT.

Floors 22



778 885 3261

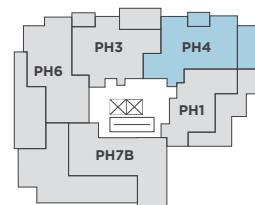
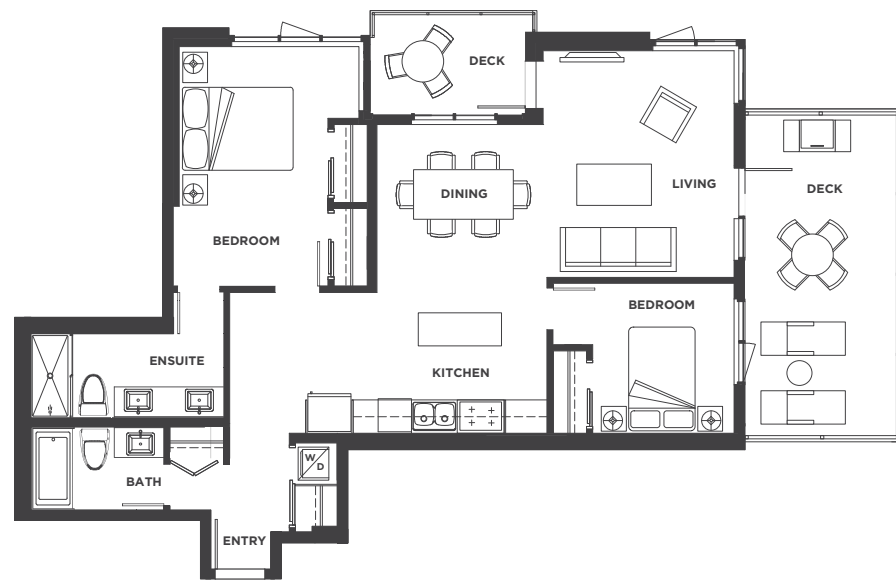
bobzhong@gmail.com

Bob Zhong 鍾博  
住宅 商業 買賣 租管



# PENTHOUSE FLOOR PLANS

## PH4

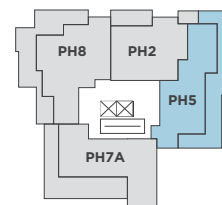
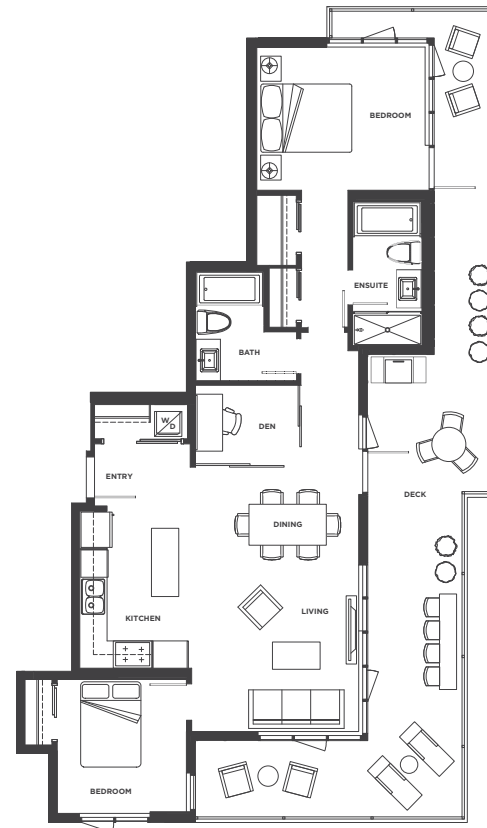


### 2 BED/2 BATH

**LIVING:** 965 SQ.FT.  
**BALCONY:** 245 SQ.FT.  
**TOTAL:** 1210 SQ.FT.

Floors 22

## PH5

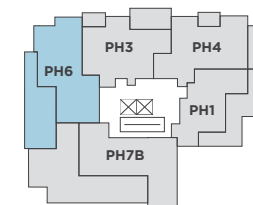
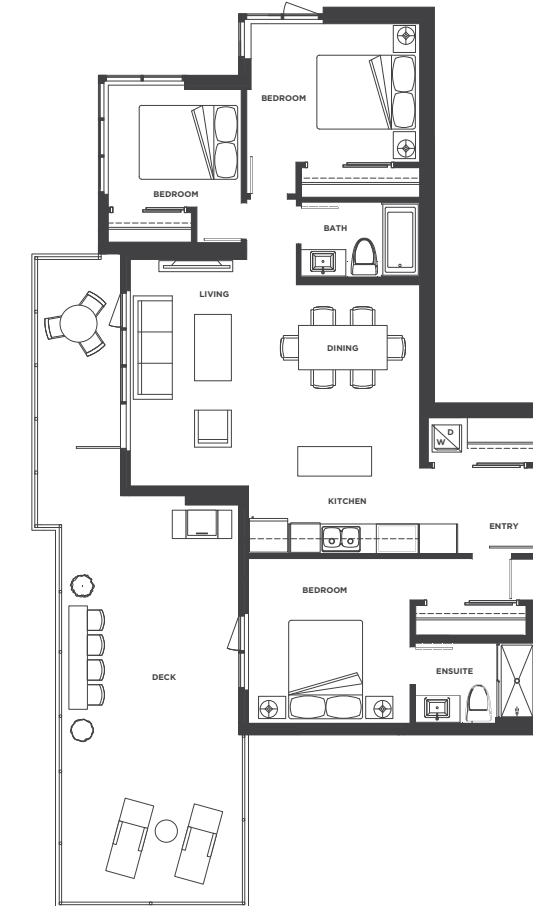


### 2 BED/2 BATH + DEN

**LIVING:** 994 SQ.FT.  
**BALCONY:** 475 SQ.FT.  
**TOTAL:** 1469 SQ.FT.

Floors 23

## PH6



### 3 BED/2 BATH

**LIVING:** 1027 SQ.FT.  
**BALCONY:** 455 SQ.FT.  
**TOTAL:** 1482 SQ.FT.

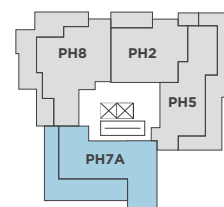
Floors 22



This is not an offering for sale. Any such offering can only be made by way of Disclosure Statement. Renderings, sketches, layouts and finishes are representations only. E. & O.E.

# PENTHOUSE FLOOR PLANS

## PH7A

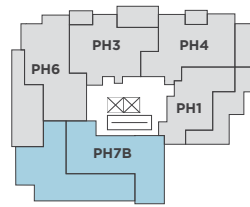
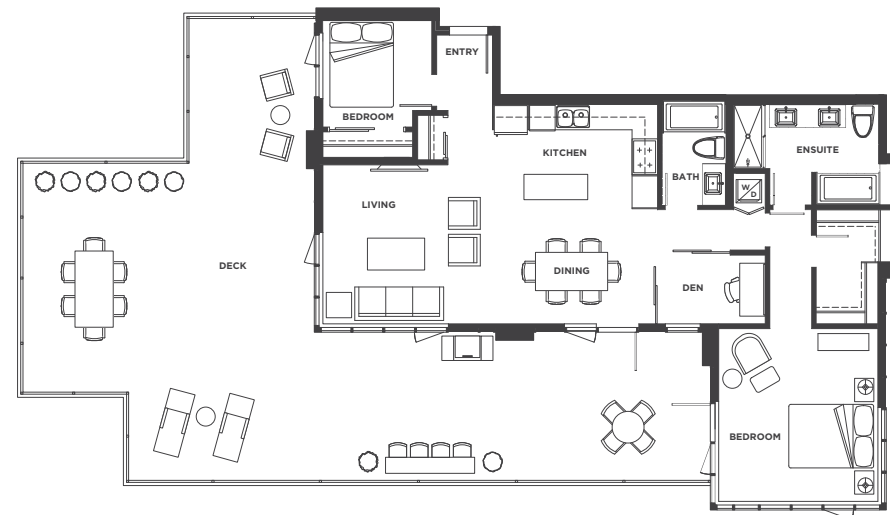


**2 BED/2 BATH  
+ DEN**

**LIVING:** 1125 SQ.FT.  
**BALCONY:** 423 SQ.FT.  
**TOTAL:** 1548 SQ.FT.

Floors 23

## PH7B

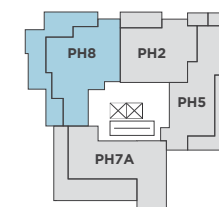
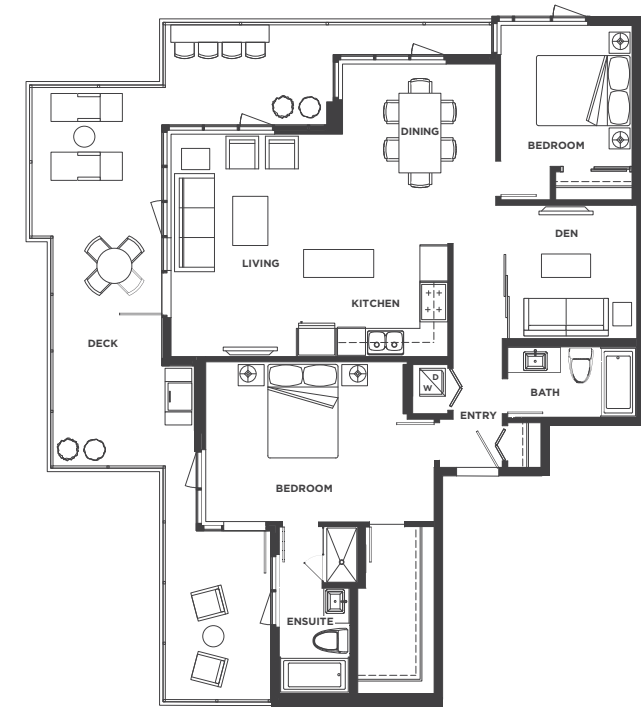


**2 BED/2 BATH  
+ DEN**

**LIVING:** 1125 SQ.FT.  
**BALCONY:** 948 SQ.FT.  
**TOTAL:** 2073 SQ.FT.

Floors 22

## PH8



**2 BED/2 BATH  
+ DEN**

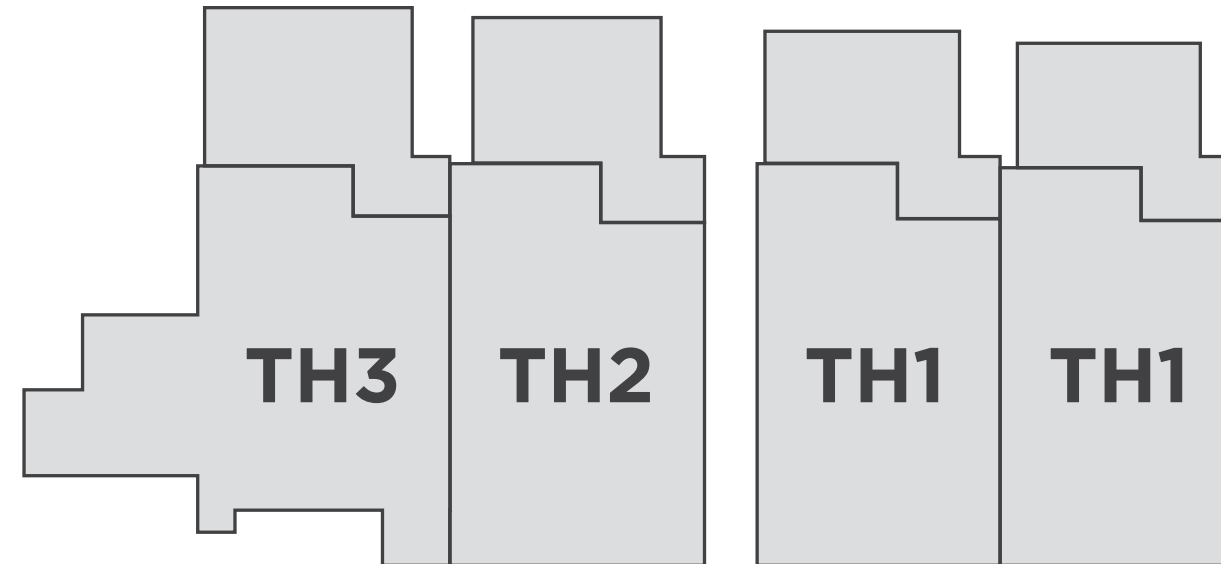
**LIVING:** 1158 SQ.FT.  
**BALCONY:** 481 SQ.FT.  
**TOTAL:** 1639 SQ.FT.

Floors 23

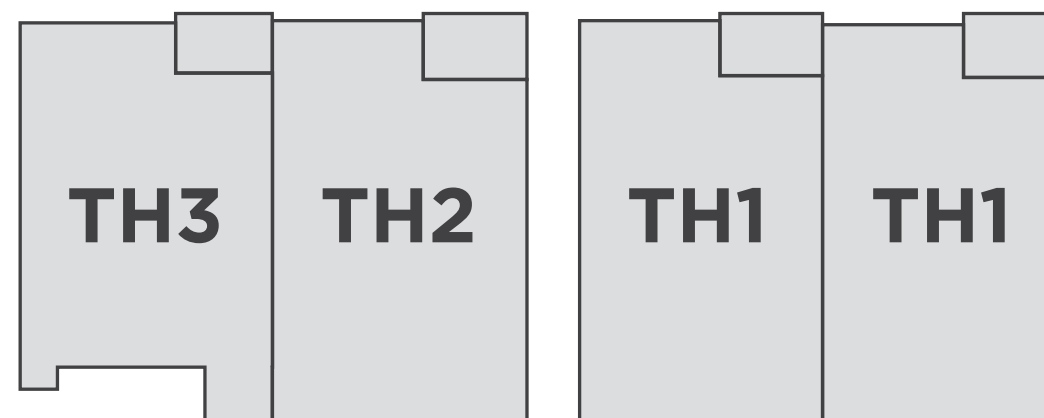


# TOWNHOMES

## DOWNSTAIRS



## UPSTAIRS



# HOME AT THE HEART OF IT ALL

## LEGEND

### PARKS & REC

- 1 Stoney Creek Trail System
- 2 Burquitlam Park
- 3 Burquitlam Community Garden
- 4 Burnaby Public Library
- 5 Cameron Recreation Complex
- 6 Vancouver Golf Club
- 7 GoodLife Fitness

### SHOPPING & SERVICES

- 8 Future Grocery Store
- 9 Burquitlam Plaza
- 10 Save On Foods
- 11 Lougheed Town Centre

### FUTURE NEIGHBOURS

- 12 Crown by Beedie
- 13 Future Development by Marcon
- 14 Uptown by Bosa
- 15 Novella by Springbank Properties
- 16 Potential Future Development
- 17 Lougheed Heights by BlueSky Properties & Bosa
- 18 Black + Whites on Foster by Intracorp Canada

### SCHOOLS

- 19 Simon Fraser University
- 20 Miller Park Community School
- 21 Banting Middle School
- 22 Lyndhurst Elementary
- 23 Mountain View Elementary School
- 24 Roy Stibbs Elementary School
- 25 Coquitlam College

### TRANSIT OPTIONS

- 26 Burquitlam SkyTrain Station
- 27 Lougheed Town Centre SkyTrain Station

- Evergreen Line
- Bike Path



**778 885 3261**

[bobzhong@gmail.com](mailto:bobzhong@gmail.com)

Bob Zhong 鍾博  
住宅 商業 買賣 租管

**WATERFRONT STATION**

TRANSIT TIME | **30** min.

**BRENTWOOD STATION**

TRANSIT TIME | **20** min.

**LOUGHEED TOWN CENTRE**

TRANSIT TIME | **5** min.

**PORT MOODY**

DRIVING TIME | **9** min.

**COQUITLAM CENTRE**

DRIVING TIME | **12** min.





[burquitolamcapital.com](http://burquitolamcapital.com)

**SALES CENTRE**  
509 CLARKE ROAD  
COQUITLAM, BC V3J 3X3

FOR ADVANCE VIP APPOINTMENTS,  
PLEASE CONTACT:

VANESSA MILLER SALES MANAGER  
778.558.6377 | [vanessa@burquitolamcapital.com](mailto:vanessa@burquitolamcapital.com)

SHARLENE WARK SALES MANAGER  
604.551.7427 | [sharlene@burquitolamcapital.com](mailto:sharlene@burquitolamcapital.com)



**778 885 3261**  
[bobzhong@gmail.com](mailto:bobzhong@gmail.com)

Bob Zhong 鍾博  
住宅 商業 買賣 租管 